

Test equipment for children high chair test according to EN 14988

Leg template according EN 14988



Art.No #08905 - A

Test bag with hanging eyelets according EN 14988



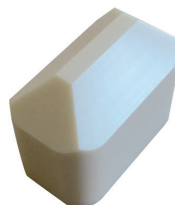
Art.No #08905 - B

Wood block according EN 14988



Art.No #08905 - C

Wedge block according EN 14988



Art.No #08905 - D

Technical Data

*Masses with an accuracy of +/- 0,5% Nominal dimension
Masses with an accuracy of +/- 1 mm Nominal dimension
Angle with an accuracy of +/- 2 Nominal angle
Forces with an accuracy of +/- 5% Nominal power*