

Sondermaschinen und Steuerungsbau GmbH
 Tel: (+49) 09151 / 4232
 E-mail: info@weinmann-online.de

Ostbahnstr. 15, 91217 Hersbruck
 Fax: (+49) 09151 / 3878
 Internet: http://weinmann-online.de

Weinmann / X-Sensor Body Pressure Mapping Systems

It allows you to compare mattress lines and continuously improve your mattress designs for better pressure relief and support.

Realistically simulate a test subjects pressure interface with the mattress.

Collect repeatable and accurate data in a tightly controlled testing environment.

Record measurements across the entire body area simultaneously.

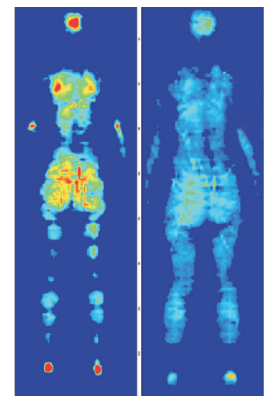
Analyse data with X-Sensors Software (export to excel).

Customize and produce high quality visual reports.

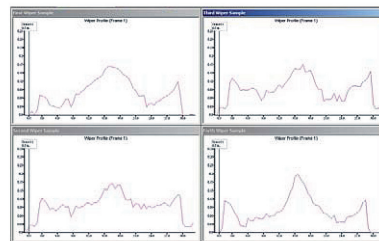
X-Sensor USB camera



pressure distribution
 and ergonomic check



Export grouped data into a spreadsheet



Technical Data

sensor dimensions 200 x 85 cm
 sensor thickness 1,5 mm
 (different sensor dimensions available)

System

Intel Processor at least 3GHz, at least 1GB RAM, 160 GB HDD
 2 x USB 2.0 interface.
 Operating System Win. XP Prof. SP3 / Win. 7 Prof.



Supply with PC software to the measurement and evaluation of the pressure distribution.

The PC is not in the scope of supply.

In case of order we install the DASY Lab Software to your PC with the following system requirements.